

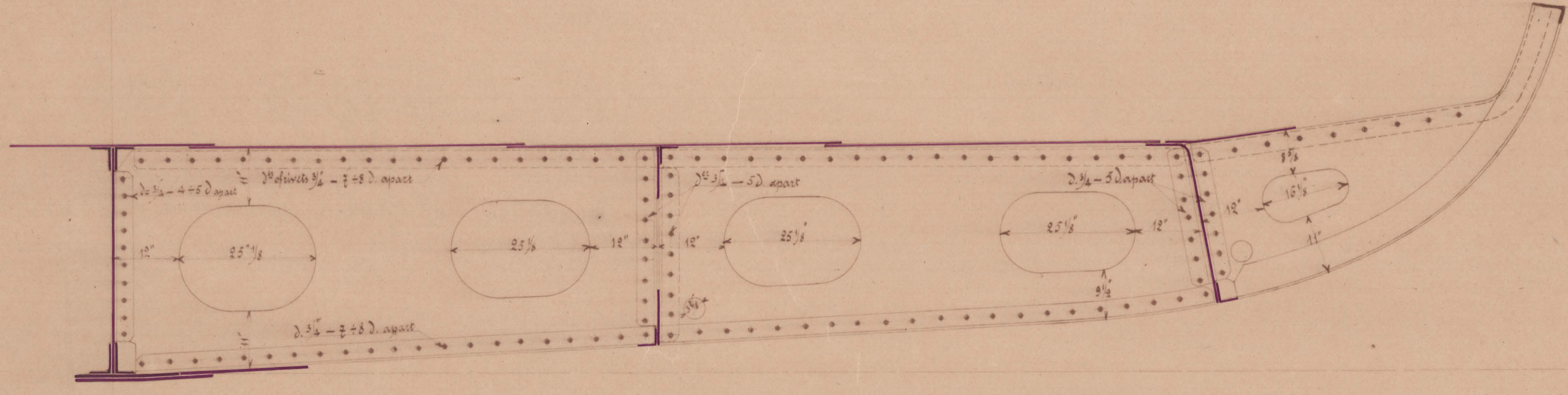
N^o 203-4

Passenger and Cargo twin screw steel steamer

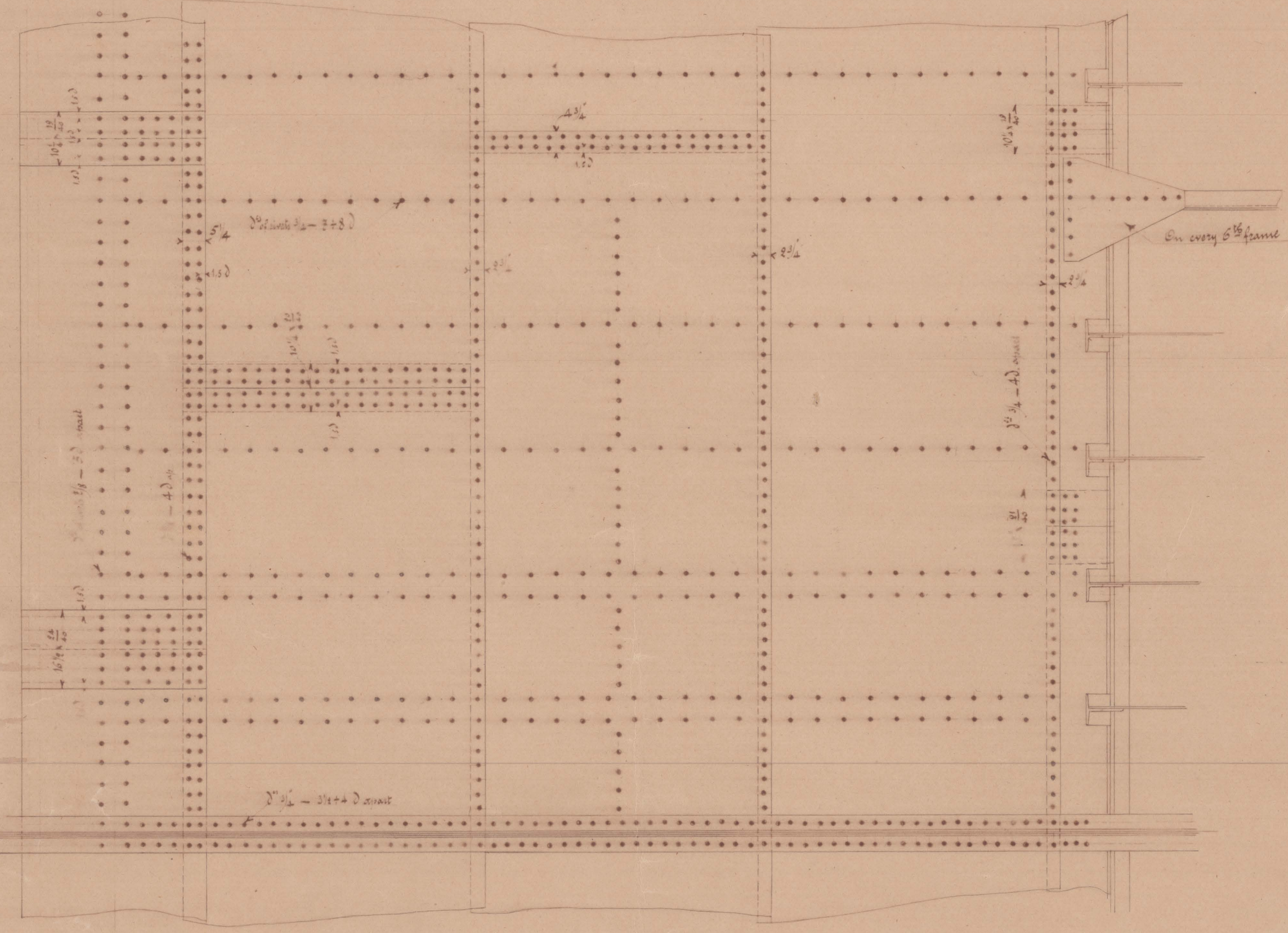
Standard - G.L. Class 100 A.L. ⚓

Details of the twisting

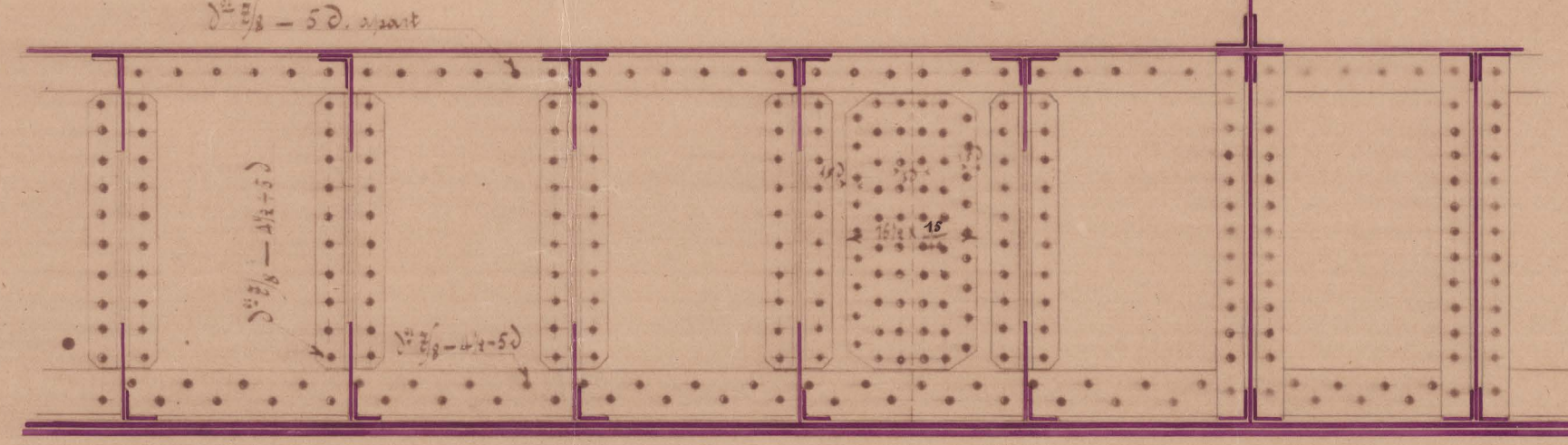
Scale 1:20 meters



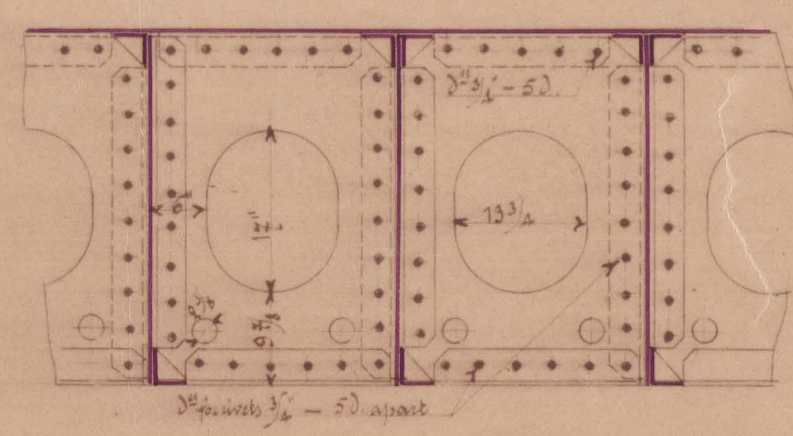
Double bottom



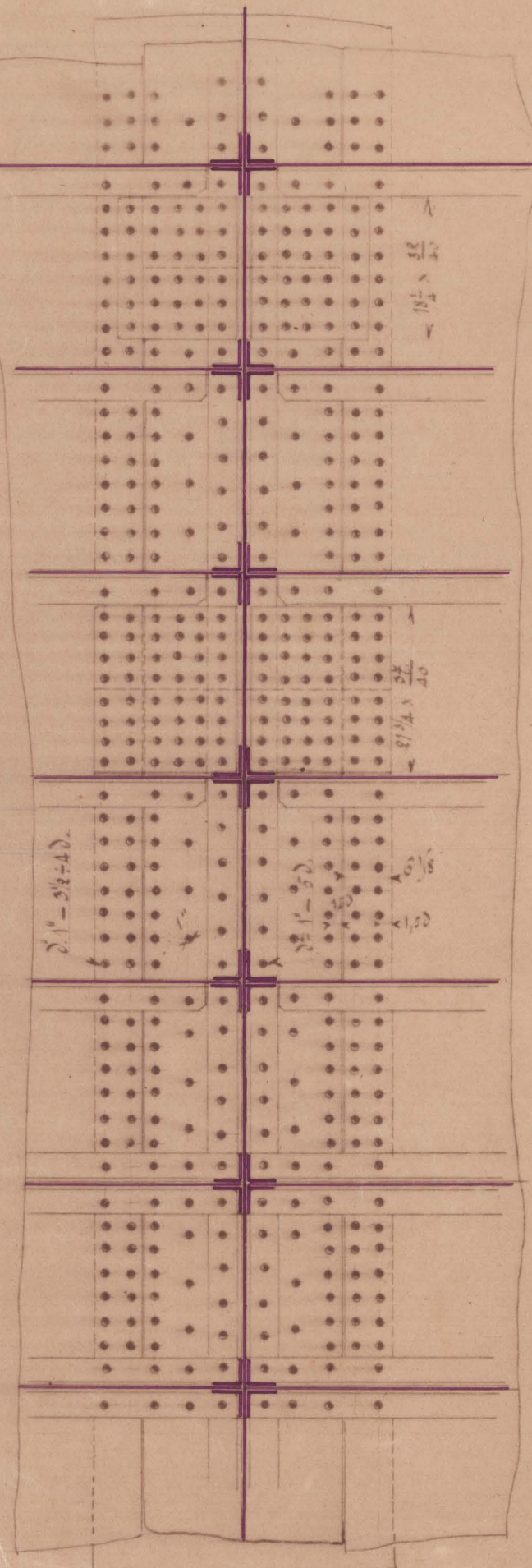
Center girder



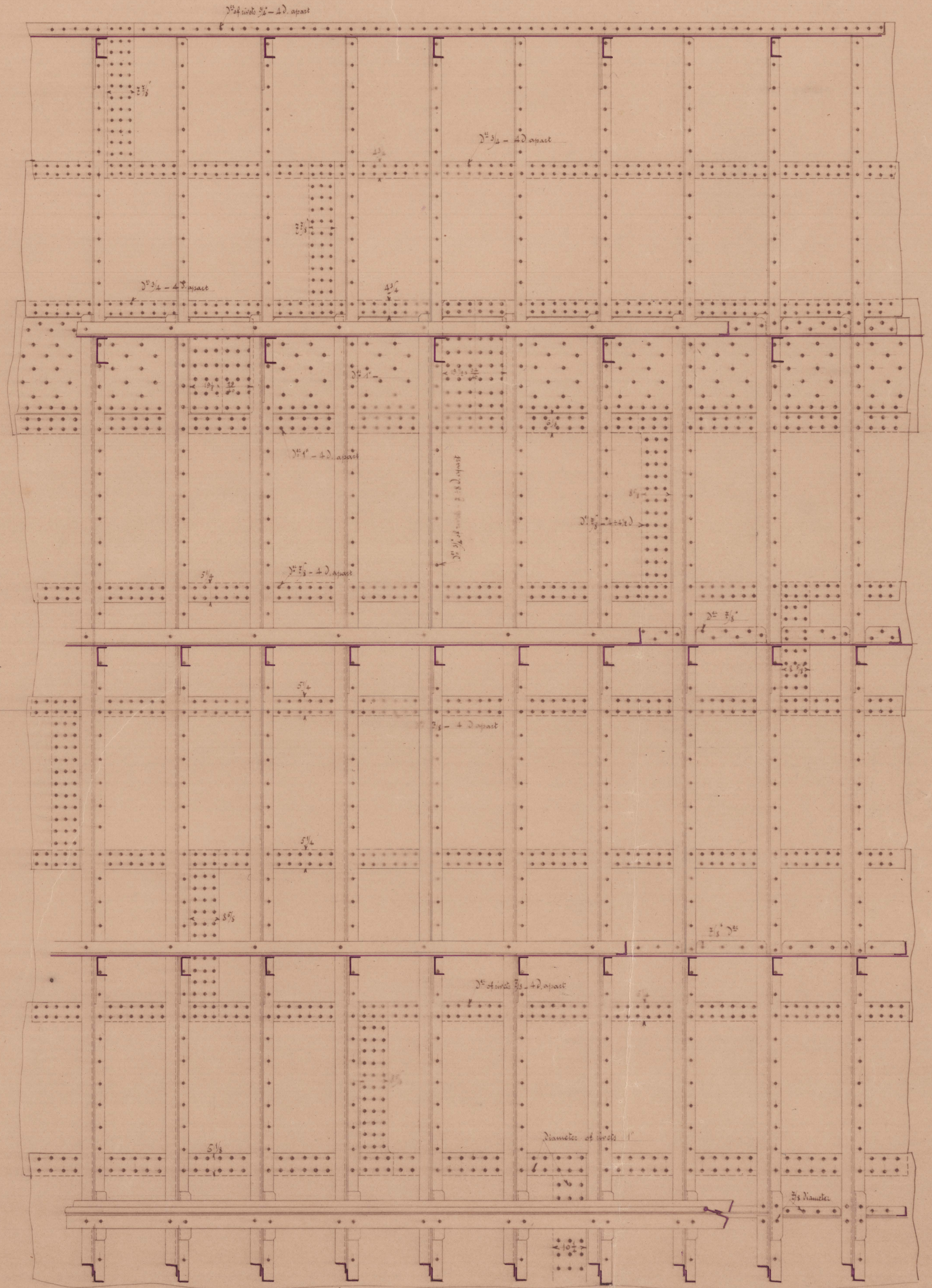
Side girders in double bottom



Flat plate keel



Outside plating



Approved for the class ⚓ 100 A.L.

on the understanding that all structural parts not shown in the drawing will be fitted in accordance with the Rules of the Germanischer Lloyd. Berlin, the 31st December 1903

Germanischer Lloyd.
ing. Pagel ing. Ulrich