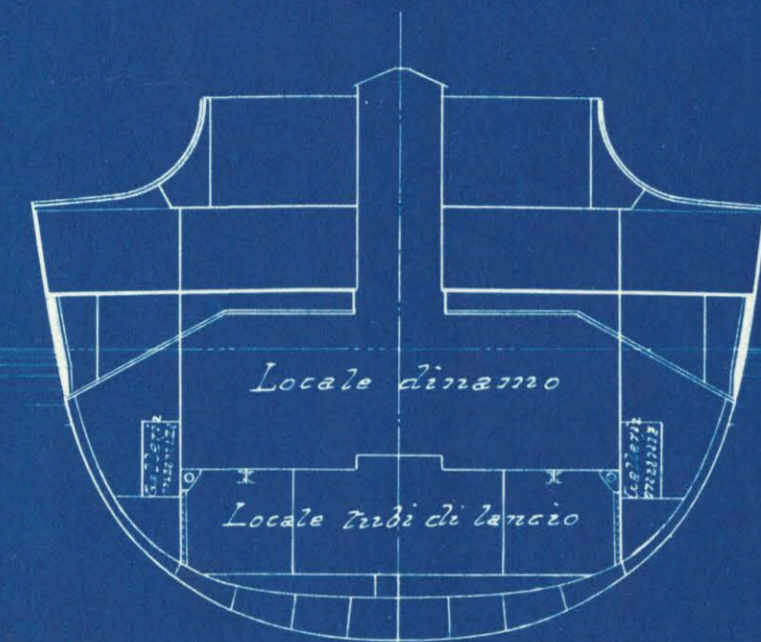


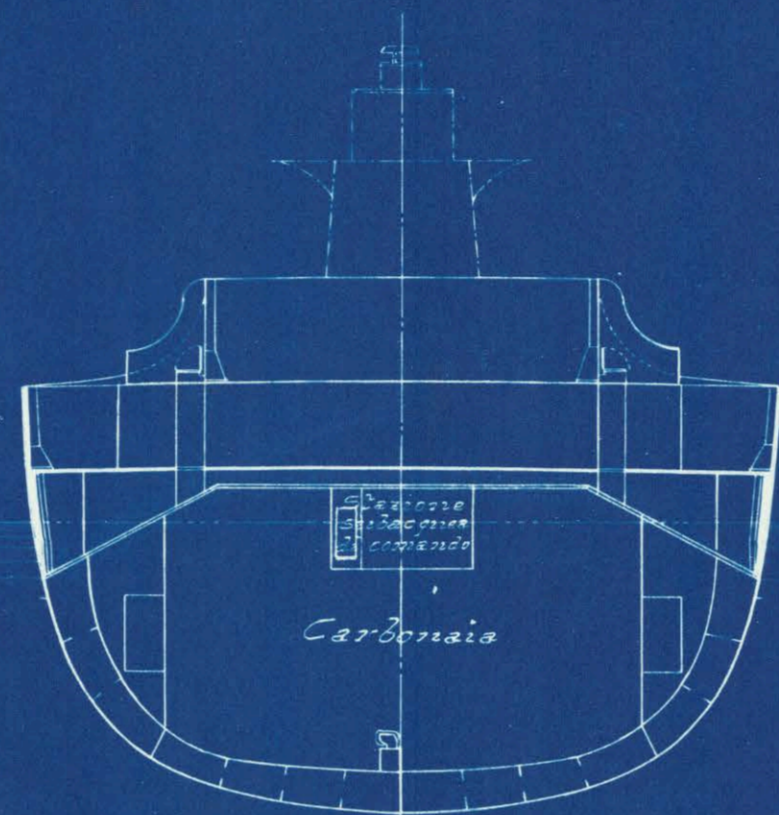
R. NAVE "ROMA"

Sezioni trasversali.

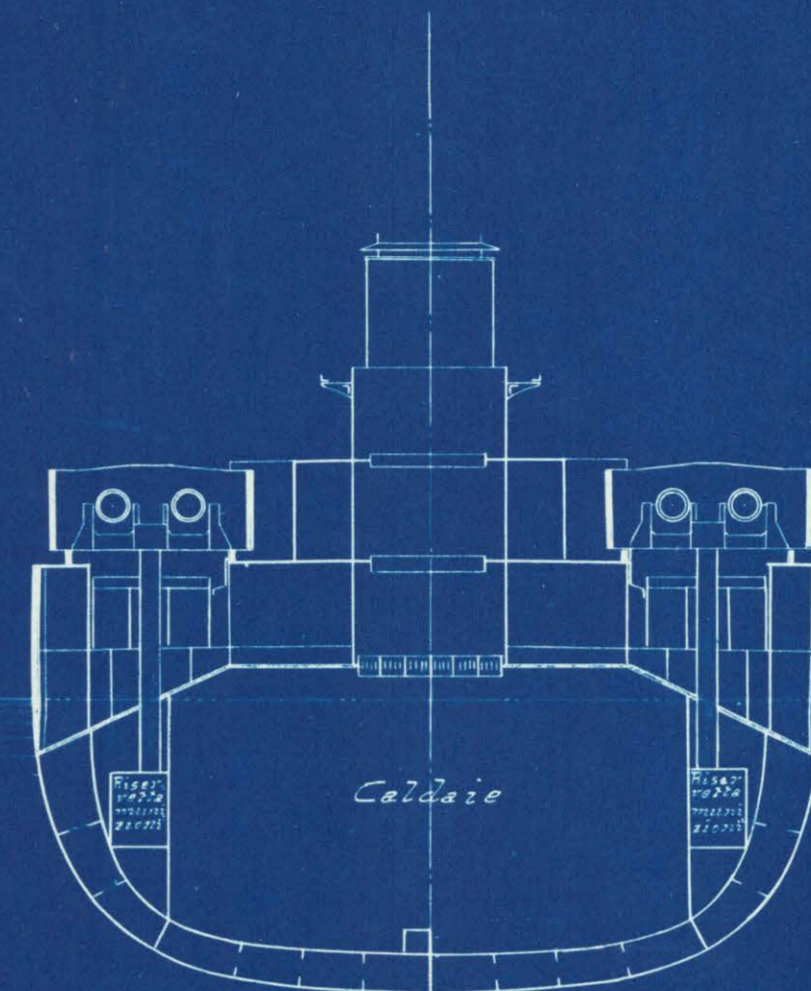
—Scala 1:200—



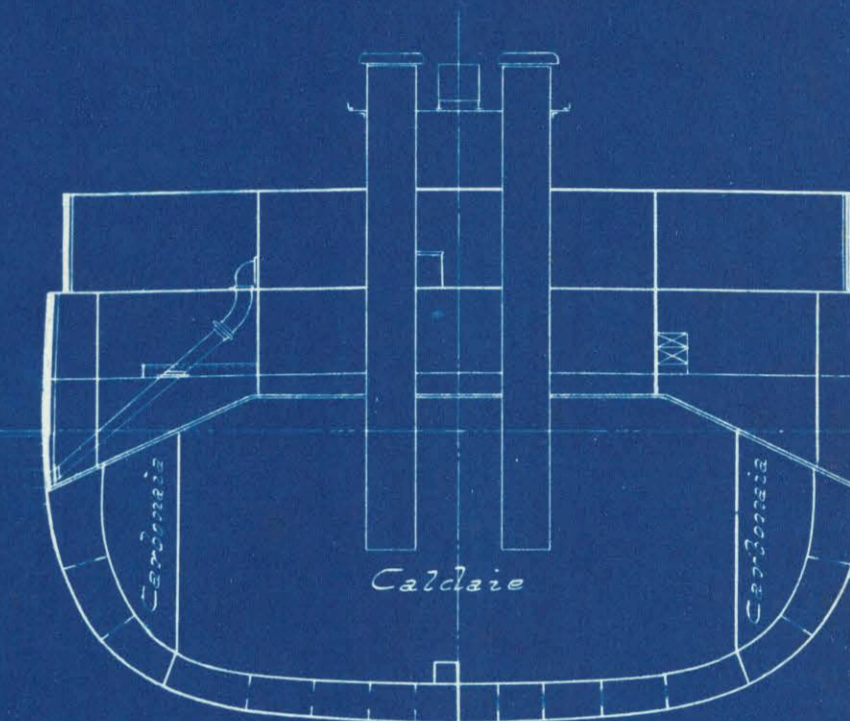
Ord. 31. A.



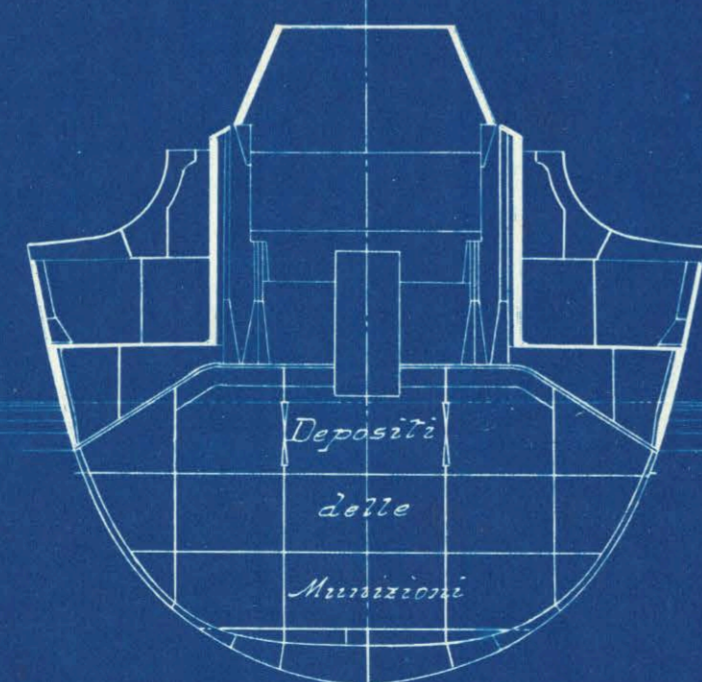
Ord. 32. A.



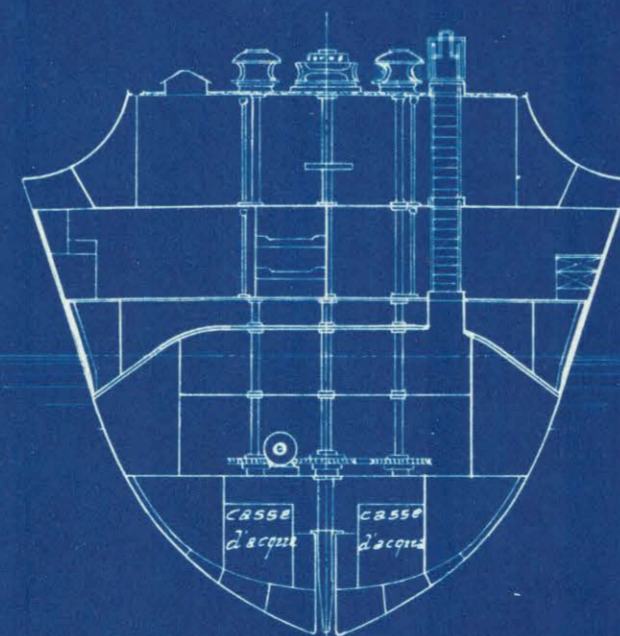
Ord. 24. A.



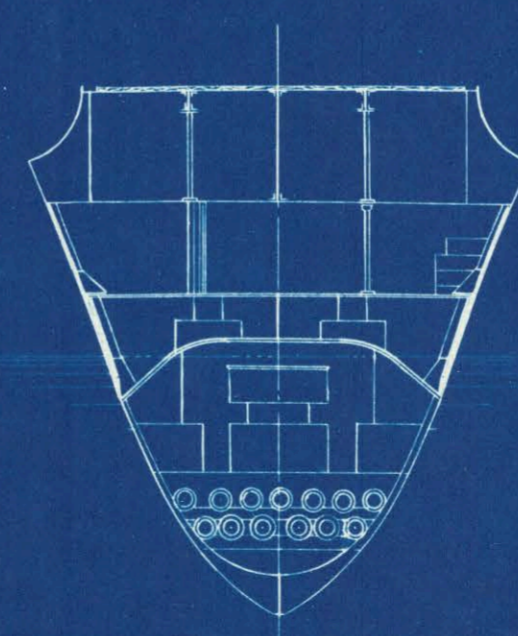
Ord. 16. A.



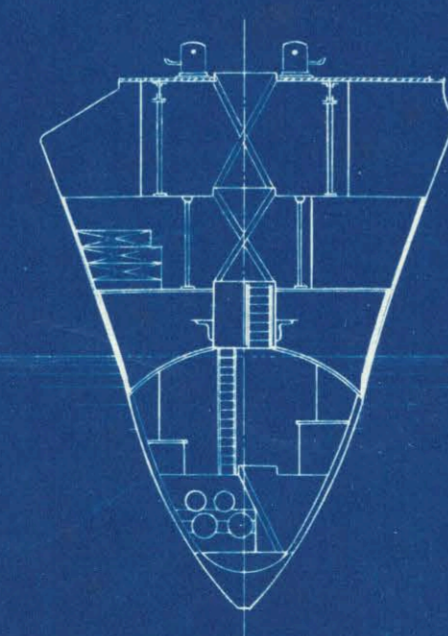
Ord. 45. A.



Ord. 54. A.



Ord. 64. A.



Ord. 70. A.

L'Ingegnere incaricato.

Spina di Luglio 1908
Il Colonnello del Genio Navale
Direttore delle Costruzioni.