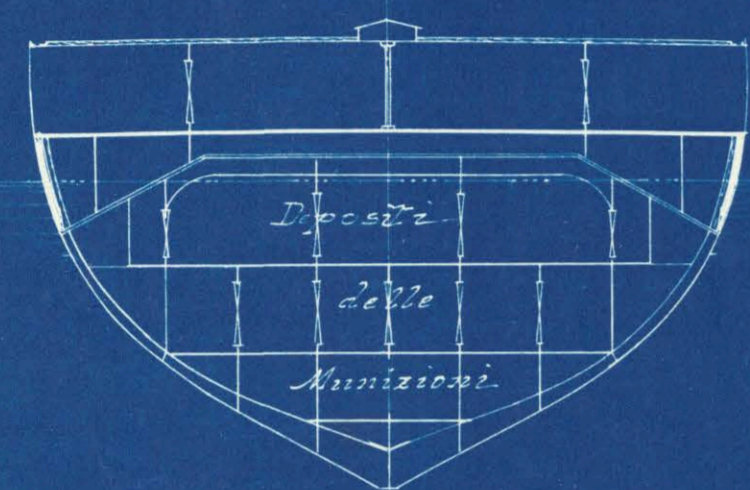


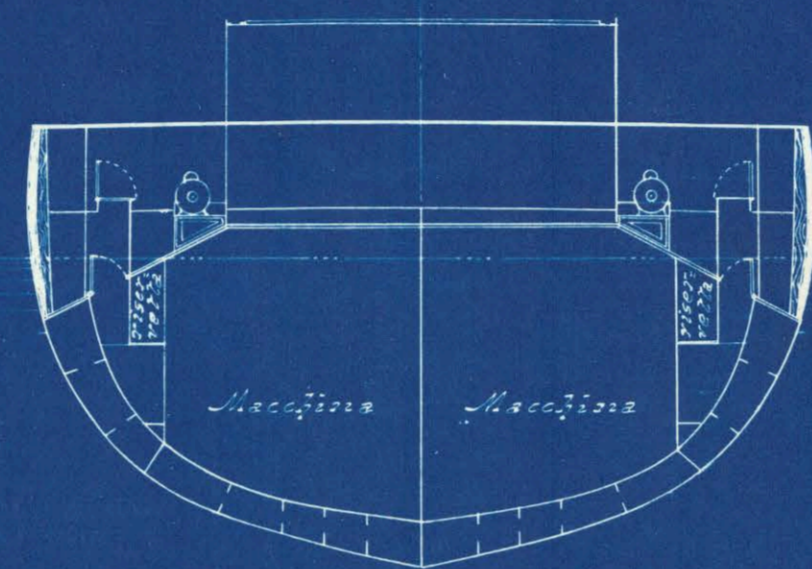
R. NAVE "ROMA"

Sezioni trasversali

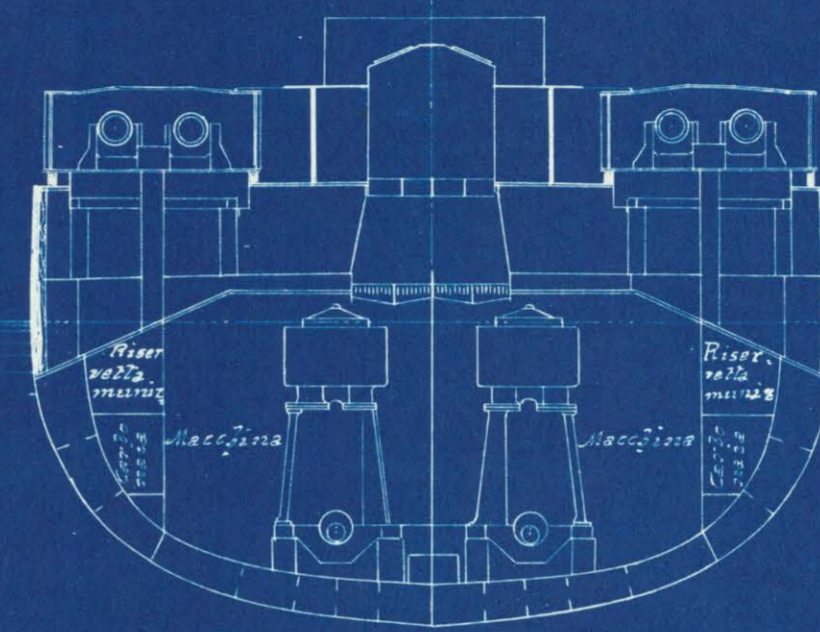
Scala 1:200



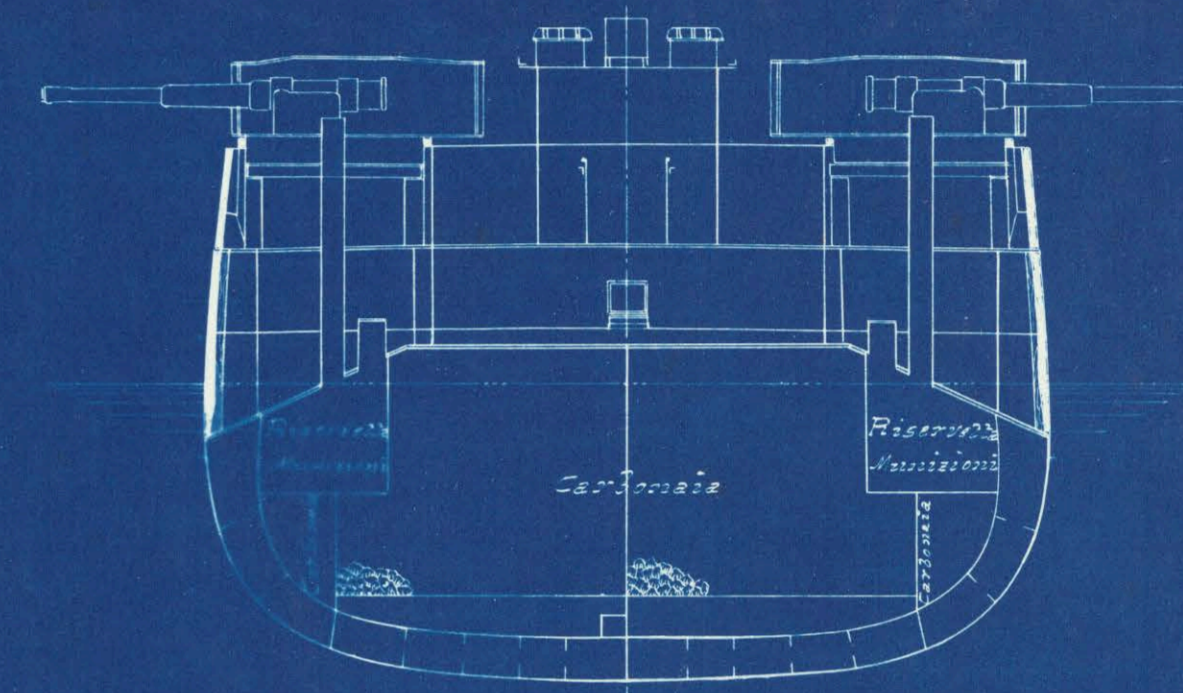
Ord. 36 A.



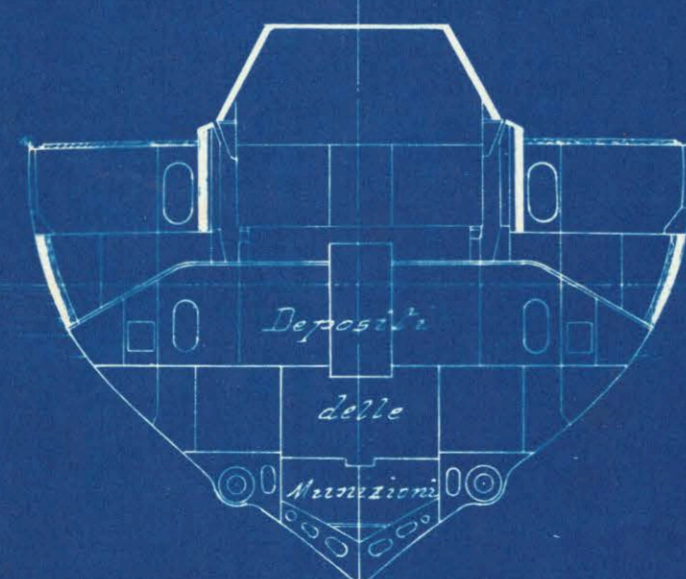
Ord. 24 A.



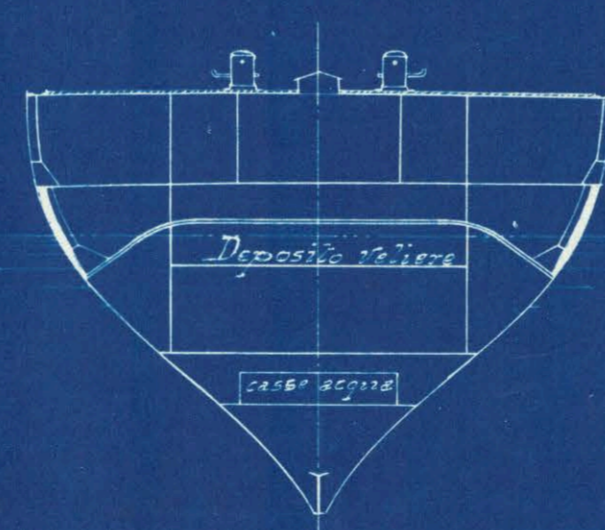
Ord. 18 A.



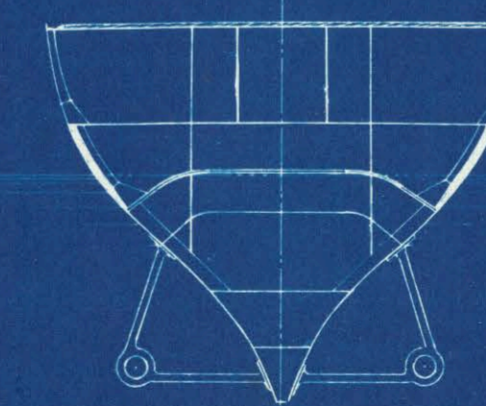
Ord. 4 A.



Ord. 43 A.



Ord. 52 A.



Ord. 52 A.

L'Ingegnere incaricato.

Spezia li, Luglio 1908
Il Colonnello del Genio Navale
Direttore delle Costruzioni.