

No 910 Multitubular Boiler

Warkworth

W Pressure 100 lbs per sq. inch

Scale 1" to 1 foot

Material

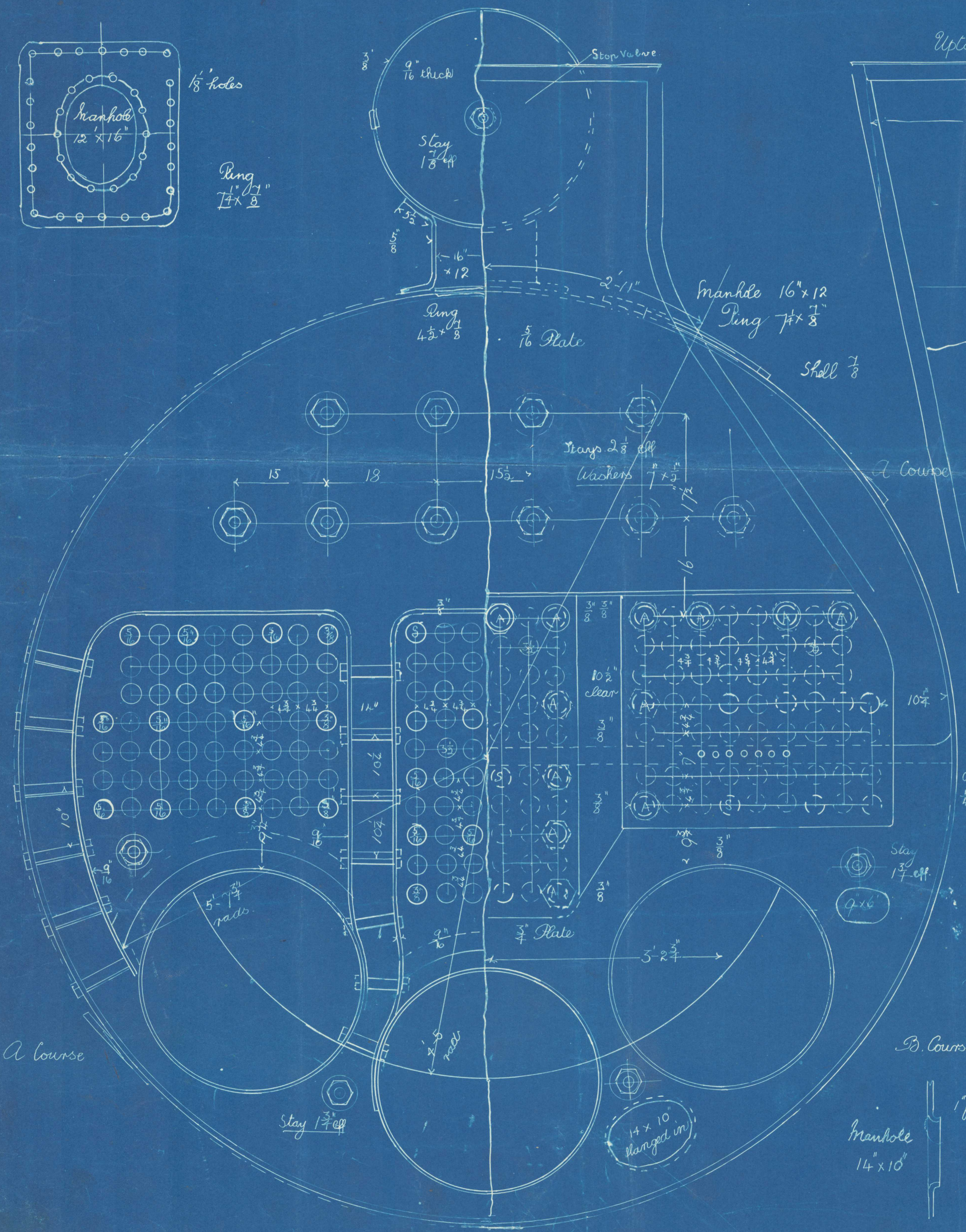
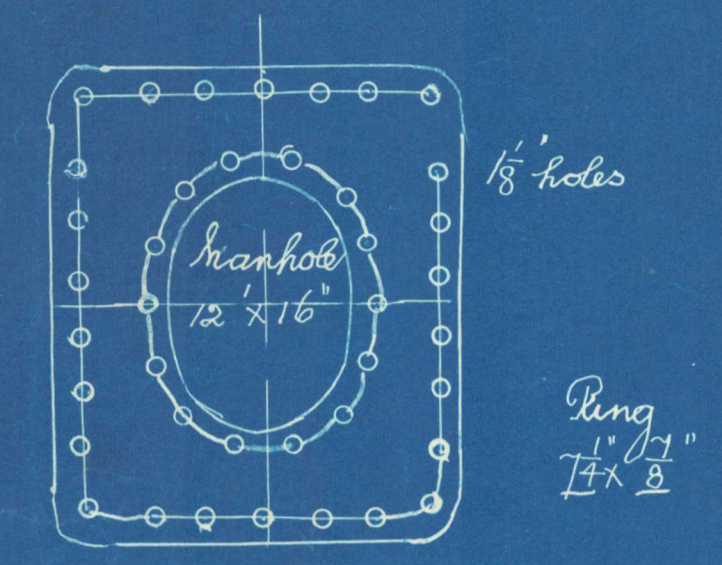
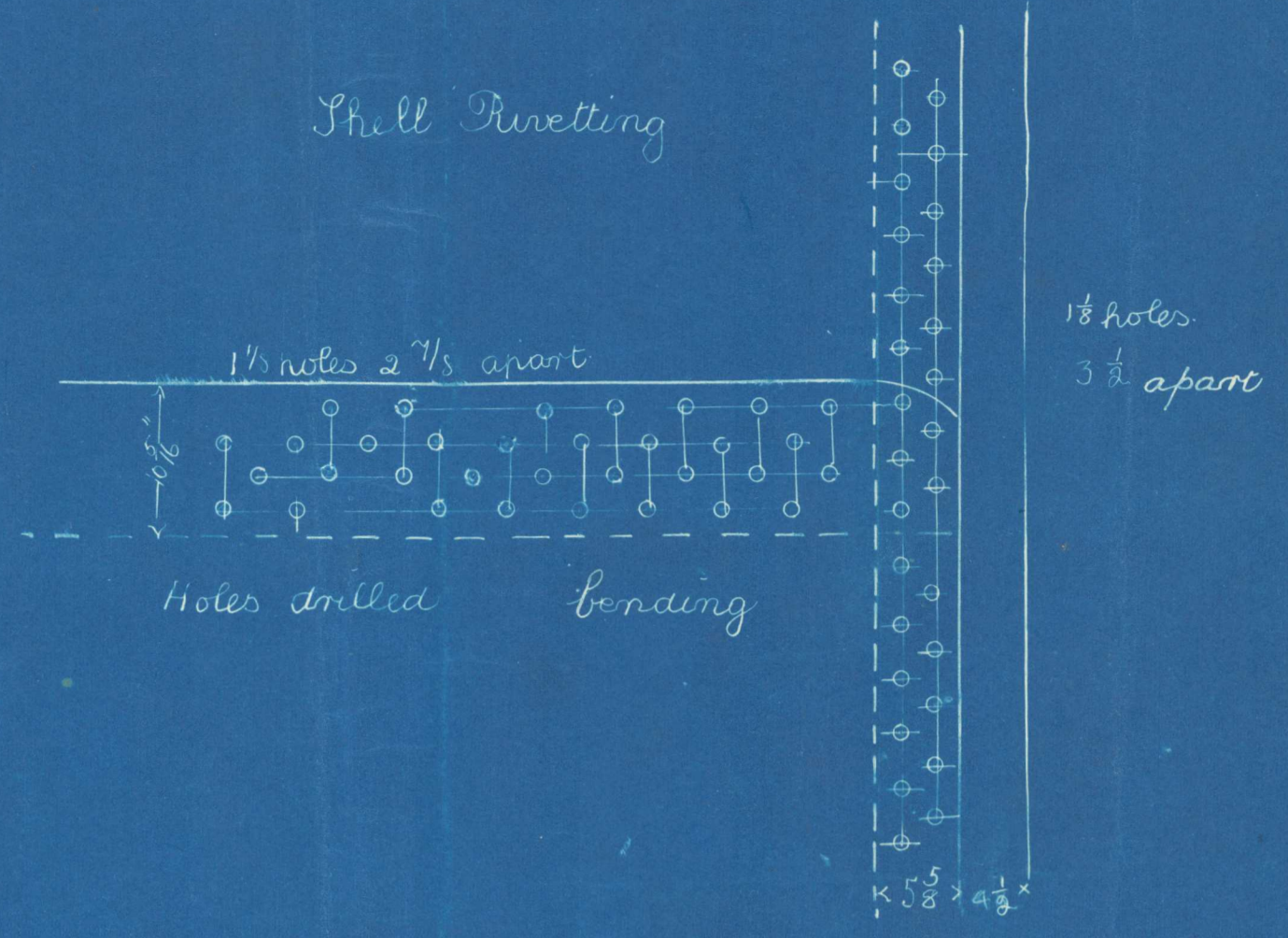
All Plates Rivets Large Stays  
Steel Bolts Stays Small Stays  
Dome neck Tubes & Uptake of Iron

Tube Plates

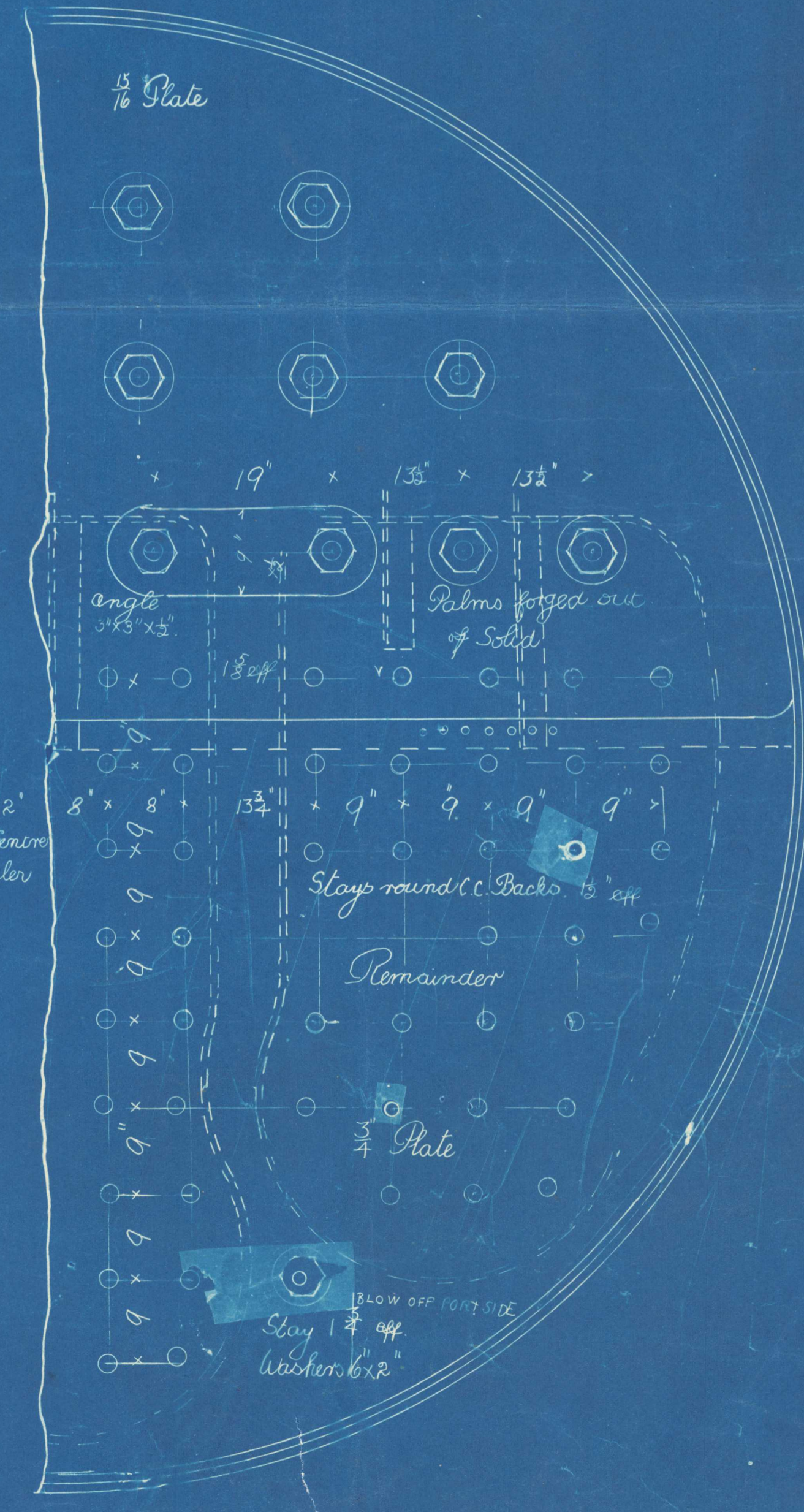
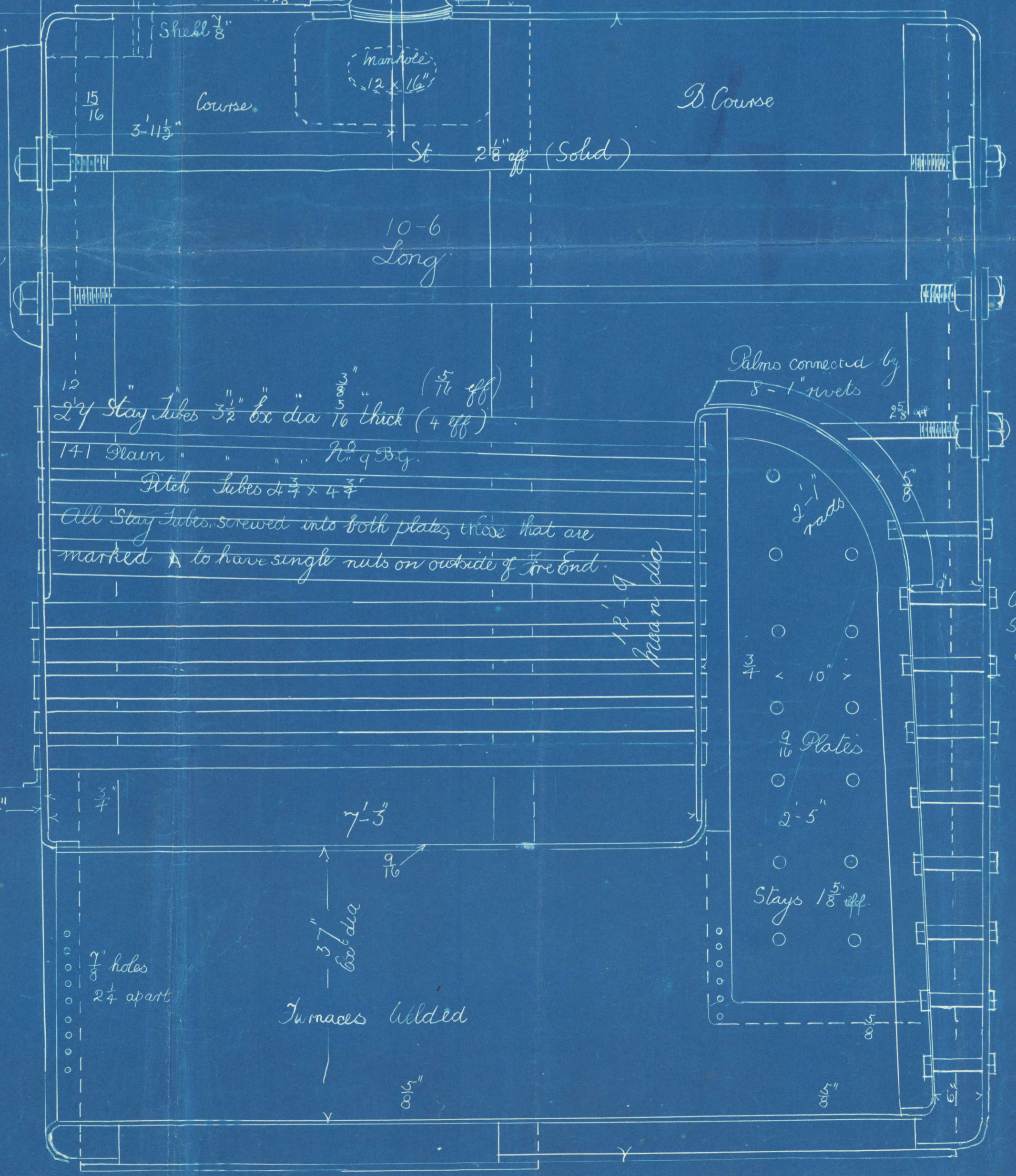
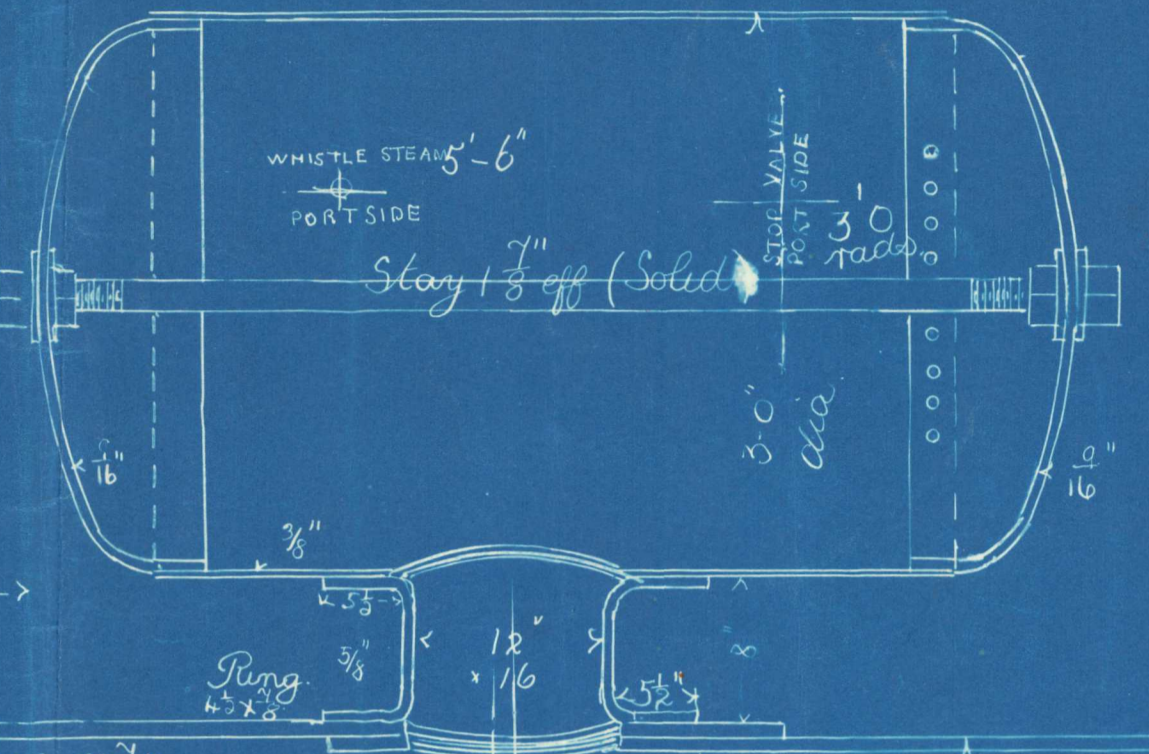
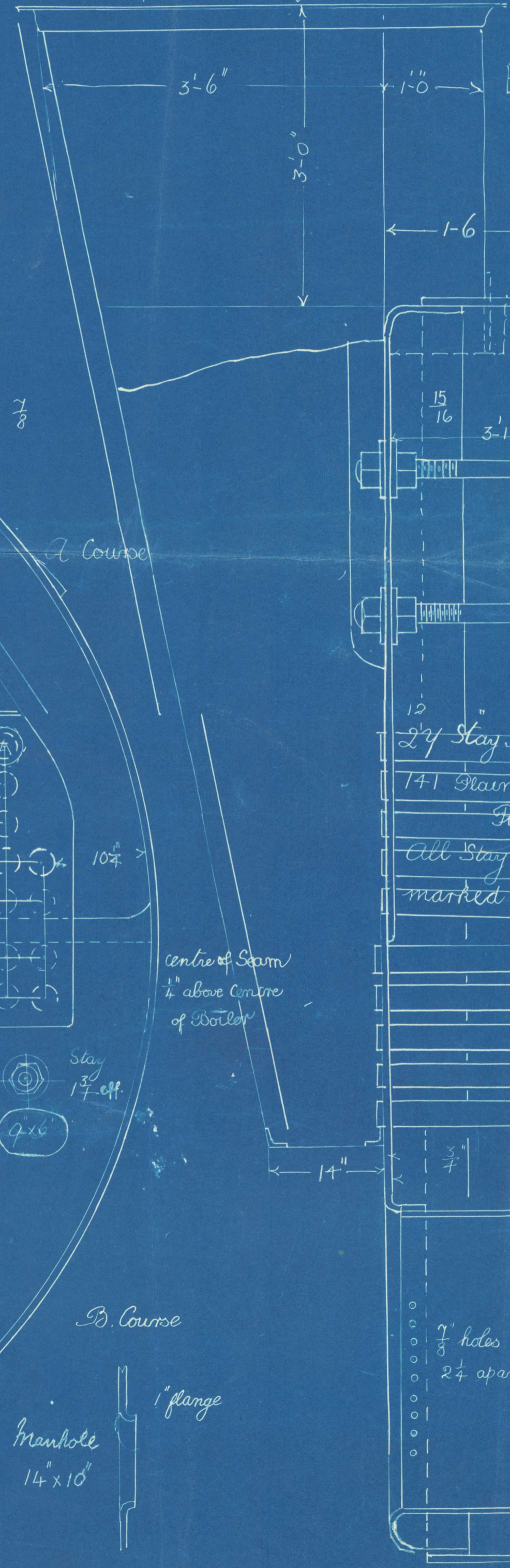
Dome Riveting



Shell Riveting



Uptake 4" - 6" Square



2 1/2 Stay Tubes 3 1/2" dia 1/16 thick (4 off)  
171 Stays 2 1/2" dia 5/16" (5/16 off)  
Pitch Tubes 4 7/8 x 4 7/8  
All Stay Tubes screwed into both plates, those that are marked \* to have single nuts on outside of fire end.

Palms connected by 8-1 rivets

Centre Seam 2" above Centre of Boiler

Blow off PORT SIDE  
Stay 1 3/4 off  
Washers 6 x 2"